

Our partners and supporters:



HUNGARIAN
GOVERNMENT

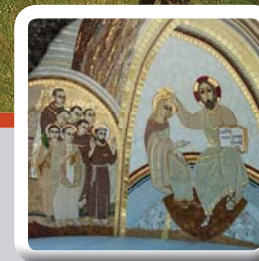
SZÉCHENYI 2020

European Union
European Regional
Development Fund



INVESTING IN YOUR FUTURE

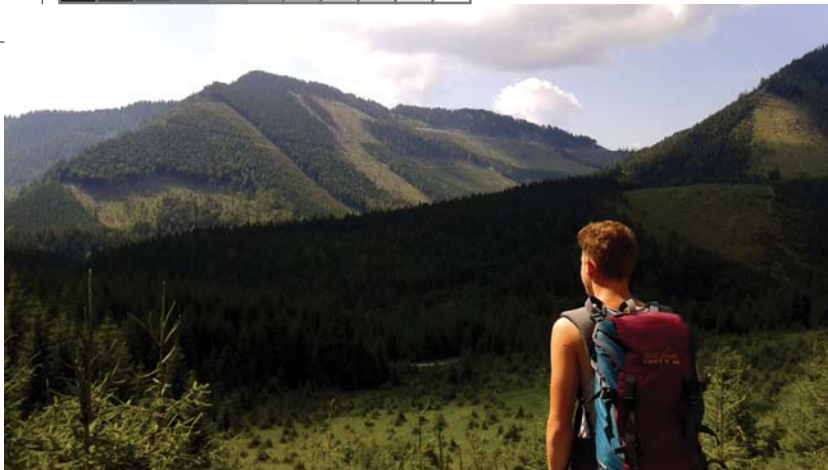
In the frame of the project entitled "Development of attractions and ser-vices related to the Northern Hungarian section of the Way of Mary - Via mariae", supported by the European Union and the Hungarian government Mary Gardens were established, in which there are rain shelters, payerdesks and Mary statues to be found. As part of the project a GPS-based mobile tour guide application is available for smartphones. As part of the interactive Internet Portal of the premium section of the Northern Hungarian Way of Mary, the Interactive tourism database assists the orientation of pilgrims. A pilgrim booklet with maps, promotional leaflets and a pilgrimage book have been prepared for the project. The amount of the support is 166.27 million HUF, which covers 94% of the full investment. Implementation of the project started on 23.09.2014. The project was finished on 30.06.2015.



MÁRIA ÚT
Pilgrimage across Central Europe
Along Values

From Gyöngyös to Mátraverebély- Szentkút

Pilgrimages for student groups
along the Way of Mary



“I am the way and the truth and the life.” (John 14:6)

In everyone's life there are decisive crossroads, such is our journey from the carefree students' years into the adult existence. It's far from indifferent which way we choose to step into the adult existence. It also depends on us whether the children entrusted to our care find the way of Christ. We might help them finding it by guiding the students to our national shrine, Mátraverebély- Szentkút along the Way of Mary's M10 section. During the pilgrimage they get close not only to the nature due to the wonderful landscapes of Mátra but also to themselves because of the internal stillness, to their peers because of the meaningful hours spent together and at the same time they get close to Christ, who is the way himself, the truth and the life. At the end of the road Our Lady awaits them, who gave human body to Christ. According to our hopes Virgin Mary – by shining and radiating her motherly face – is able to direct their steps onto the way of peace thus opening the gates of faith.

Services:

- 2 nights' accommodation sleeping in sleeping bag, on mattress: Mátraháza (Alverna House), Fallóskút (Tourist House)
- 2x hot dinner, 3x lunch (Mátrafüred, Galyatető, Tar), 2x breakfast
- thematic topics, Mobile application
- optional service is the travel to the starting point and from the endpoint
- guided pilgrimage

Contact and registration:

The Way of Mary Public Association
József Lendvai, Tel: +36 30 429 53 01
e-mail: lendvai.jozsef@mariaut.hu
web: www.mariaut.hu



Dates are optional, but on Friday-Saturday-Sunday are recommended.

- Day 1:** Gyöngyös – St. Ann Chapel – Mátrafüred – Mátraháza
17 km, 650 m altitude (up), 120 m level (down)
- Day 2:** Mátraháza – Galyatető – Mátraszentimre – Fallóskút
16 km, 320 m altitude (up), 320 m level (down)
- Day 3:** Fallóskút – Tar – Mátraverebély – Mátraverebély-Szentkút
20 km, 340 m altitude (up), 840 m level (down)

What to consider before you apply to the pilgrimage?

Pilgrimage guidance, leading and coordination and management of the daily activities are suggested for the good of the age group and in order to achieve the pilgrimage's objective. The program is recommended from the age of 14, however also younger students can walk the pilgrimage but in smaller groups.

EQUIPMENT:	Seasonal hiking equipment, comfortable footwear, clothing, sleeping bag.
PARTICIPANTS:	Maximum number of participants: 20 people